

The background features a dark, almost black, space filled with dynamic, flowing shapes. On the left, there are several overlapping, curved bands of a rich golden-brown color, resembling liquid or smoke. On the right, a bright, glowing blue and yellow arc curves across the frame, suggesting a celestial body or a light source. The overall effect is one of movement and energy.

New features in Version 11

New features in Version 11

The new program version offers far-reaching improvements and new options that simplify the creation of sophisticated designs for print, online and tablet devices. The upgrade is worthwhile for all users who want to work faster, need more comfort, work with large documents, create documents for “social media”, magazines or books, or share documents with other users.

Documents

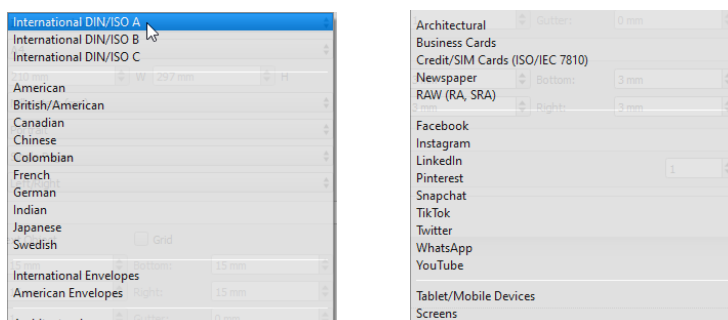
Create new documents

The **New** option now consists of the four options **Document**, **Document from Template**, **Collection** and **Library**. Please note that not all options are available in all editions.

Document

The option to create a new document has been restructured and extended:

- Over 400 new paper formats sorted according to international and national standards.
- Over 30 new document formats sorted according to international and national standards.
- For the first time, the program also supports digital formats for tablets, mobile devices and social media (Facebook, WhatsApp, Instagram, LinkedIn). Therefore, we no longer speak of paper formats in this context, but of document formats. For this reason, the new unit of measurement “Pixel (px)” has also been introduced.
- All document formats now have a predefined unit of measurement. For example, American formats automatically have the unit of measurement “inch”, digital formats (Facebook, WhatsApp, etc.) automatically have the unit of measurement “Pixel”.

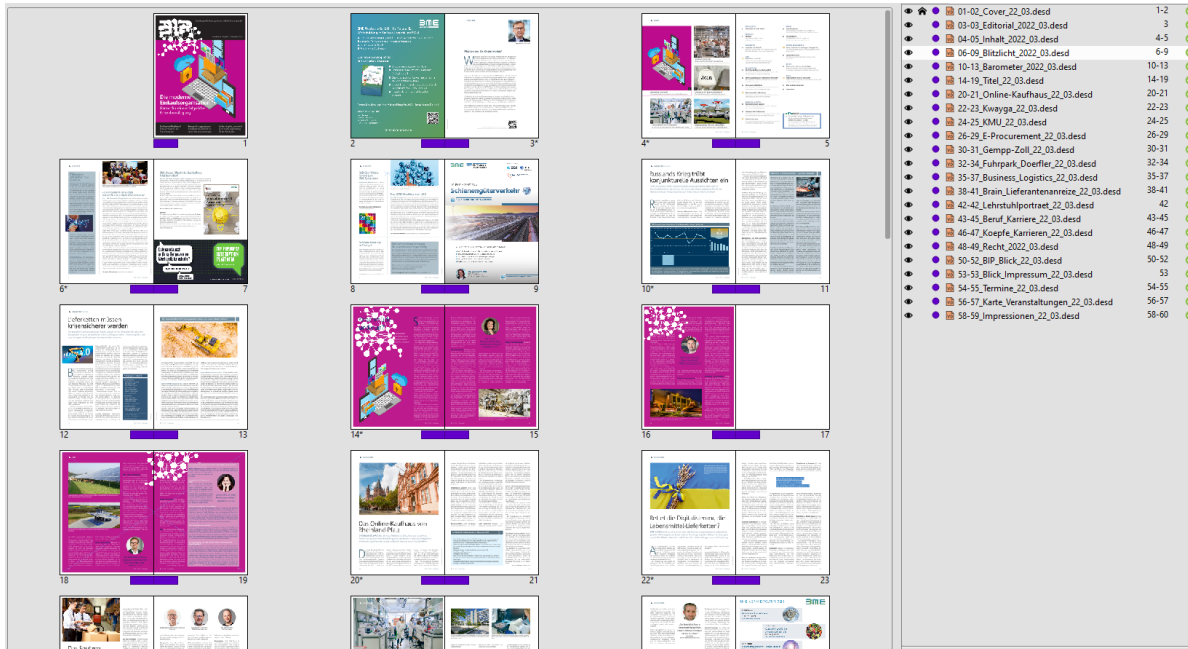


Document From Template

The Document From Template option allows you to create a new document based on a template stored in VivaCloud. VivaCloud provides ready-made templates for several topics (resumes, brochures, etc.). These templates can be modified and adapted as desired. The range of templates is regularly expanded and is language-related.

Collection

The Collection option lets you combine multiple (layout) documents into one (collection) document. This option is useful if, for example, you want to create a magazine, journal, book, or similar project that consists of multiple documents.



In addition, you can use the Collection to:

- Synchronize colors, style sheets, layers, alias pages, or preferences across documents,
- fully automatically create cross-document directories (tables of contents, indexes, etc.) for all documents in the collection,
- combine documents with different page formats, and
- export all documents in the collection as a single PDF,
- archive collections and/or their documents.

Library

The **Library** option lets you organize and store objects and images in a library. This option is useful if you want to create, for example, a magazine or journal or a similar project where you want to use recurring objects, groups, texts, styles or images.

Opening documents

- Opening documents has been significantly accelerated.
- The **Dependent documents** option allows you to automatically open multiple documents in addition to the selected document. This option is useful when, for example, you want to open a document and its library at the same time.
- Opening documents from **VivaCloud** allows searching files with keywords.
- Opening **InDesign** documents has been improved.

- The **AI** and **PDF** options allow you to import Adobe Illustrator and PDF documents not only as images, but also to open and edit them as documents. This option is useful if, for example, you want to post-process a PDF whose source document is no longer available.

Objects

- Fourteen new tools for creating diamonds, triangles, speech bubbles, and much more. Until now, these objects often had to be created with the polygon or path tool.



- Revision of the selection of objects and groups.
- Automatic resizing of text objects during input with minimum and maximum sizes.
- Automatic resizing of text objects by double-clicking on a sizing handle.
- Interaction rules for moving and stretching objects. This option is useful if, for example, you want to ensure that an object may only be moved and/or stretched vertically.
- Improved representation of drop shadow.
- New unit of measurement **Pixel (px)** for objects.

Pages

- When assigning Alias pages, the content such as images and texts are preserved even if it is a completely different layout. This option is useful if you want to try different designs with the same content.
- The **Name** option allows you to give a name to a document page. This option is useful for finding your way around large documents more quickly or for using the name of the page as the file name when exporting individual pages.
- The **Background Color** option allows you to specify a background color for a document page and/or an Alias page. This option saves you from creating a corresponding object in the size of the document page.
- You can assign an Alias page to a document page by dragging and dropping it onto the document icon in the Pages palette. Additionally, you can also assign an Alias page by dragging and dropping it onto the document page.
- The **Margins & Columns** option lets you define individual margins and columns for each Alias page.
- The **Alias Page View** option lets you control the visual appearance of the Alias pages. This option is useful if you want to visualize different designs of Alias pages.

- The position of the separator line between document pages and Alias pages in the Pages palette is saved in the program preferences.

Text & Typography

General

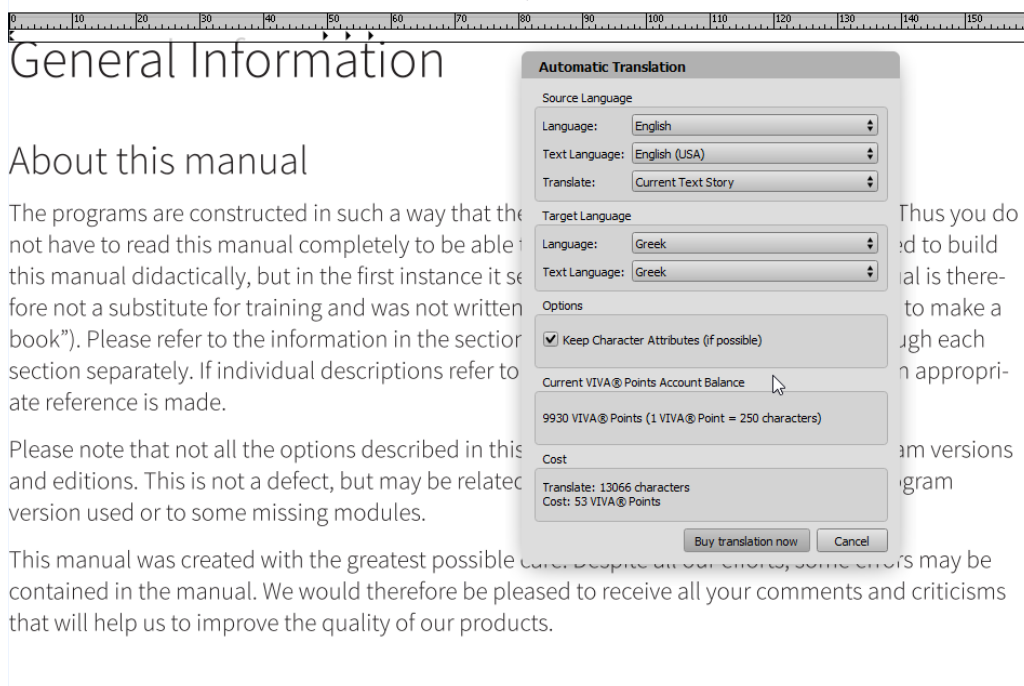
- Entering text, especially very long texts has been accelerated considerably.
- The Text on Path option allows you to enter and edit text along any path. This option is useful for displaying texts in circular form, for example.
- Enhanced options for text runaround.
- Enhanced options for creating tables and index, also in connection with the Grep styles and Nested style sheets options.

Styles

- The **Following Style Sheet** option lets you specify another paragraph style sheet for paragraph style sheets that is automatically applied to the following paragraph.
- The **Grep Styles** option lets you automatically mark up any string with a character style sheet.
- The **Nested Style Sheets** option lets you automatically mark up the beginning of a paragraph up to a specified character with a character style sheet.
- The Text Format Inspector option lets you search for any style attributes.
- The Character Skew option allows you to specify an individual angle for the skew of a character. This option is useful if the font has an italic style or you need a different angle.
- Advanced options of links for URLs and email addresses.

Language

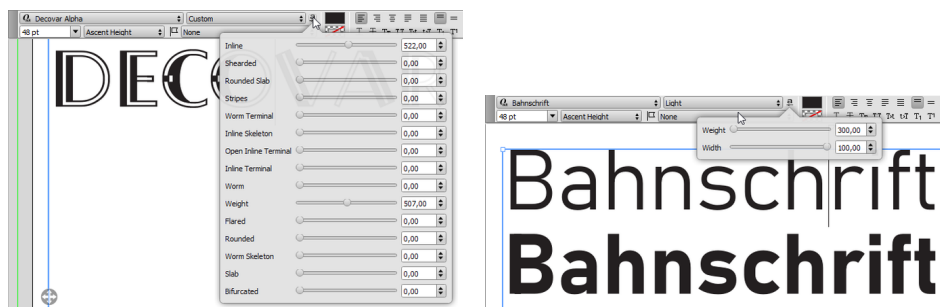
- The Translate option allows you to translate an entire document or only certain parts into over 25 languages fully automatically within seconds.



- The **Dictionaries** option allows you to download and install freely available dictionaries for spell checking, hyphenation and thesaurus in over 50 languages fully automatically (Windows & macOS only).
- Updating the **Duden** library provides you with the latest version of the Duden for spell checking, hyphenation and grammar checking.

Fonts

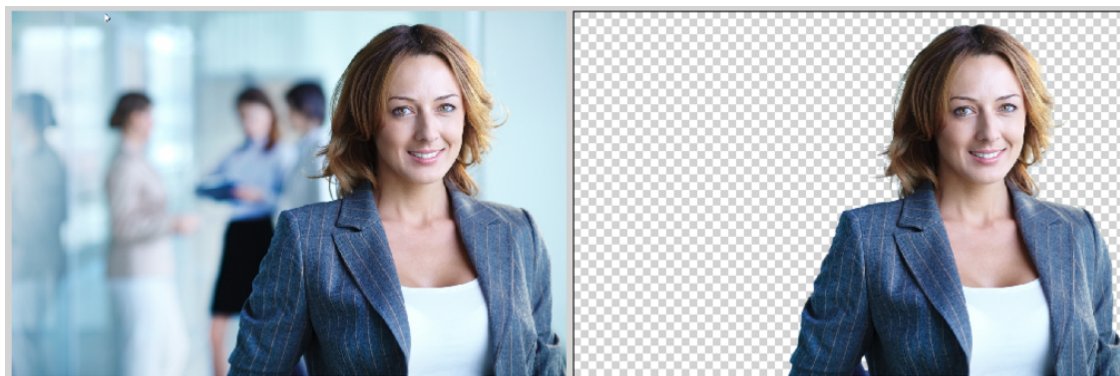
- Support for variable fonts. The options are dynamically determined by the font.



- Missing fonts can be dragged and dropped onto a document.
- Improved OpenType palette for numerals and format sets.

Images

- The **Automatic Clipping** option allows you to remove the background of an image automatically. The program detects a background based on artificial intelligence and solves even difficult tasks, for example, with human hair. Since this option uses a third-party solution, it is chargeable. Billing is per image, with all thumbnails and one high-resolution image per month being free. For further images you need VIVA© Points.



- The **Swap mode** option allows you to swap image contents using drag & drop. Simply select the option in the menu or the Quick Access palette and drag the desired image with the mouse button pressed onto the image object with which you want to swap. When swapping, the images are automatically adjusted to the respective image object so that no white spaces are created.
- The **White Space Optimization** option ensures that no white space is created when moving and scaling images. This option is especially helpful for beginners.
- With the option **Fill Frame Automatically**, you ensure that imported images are automatically fitted into the image object. This also has the effect that the existing scaling of an image is lost when importing a new image.
- The **Preferred Folder** option allows you to specify for each image object which folder should be opened when a new image is imported. This option is useful when creating templates for end users. For example, you can ensure that the user imports a new logo, primarily from the Logos folder.
- The **Export Quality** option lets you specify for each image object the quality at which the image will be exported. This option is useful if, for example, you create PDFs of the document mostly in low resolution, but the company logo should always be exported in high resolution.

Tables

- All actions in tables can be undone.
- Rows and columns can be moved or copied interactively.
- Access rights for tables have been extended. You can define whether a user can create tables or modify only rows/columns or edit only the content.

Export/Printing

- Exporting PDF and printing documents has been significantly accelerated. In addition to a general acceleration, the calculation of images in particular has been significantly accelerated. When recalculating the resolution or converting to other color spaces, all available processor cores are used in parallel. Previously, images were calculated one after the other with one processor core.
- The **Convert Text to Paths** option allows you to force the conversion of text to paths when exporting PDFs, although normally the font would be included. This option is useful if you want to ensure that the texts in the PDF are not selectable or editable.
- The option **Create PDF Bookmarks** allows you to create a table of contents bookmark automatically when exporting PDFs.
- The **Email HTML** option allows you to export a document as HTML for email. The option takes into account the fact that e-mail programs have only a fraction of the HTML functionality of an Internet browser. Images are optionally included and encoded accordingly (base64). Corresponding documents should also consist of only one document page and also only one table.
- The **Effects** option allows you to specify the resolution of effects (e.g. drop shadows, etc.) when exporting PDFs.
- The **Replace with Page Name** option allows you to specify that the name of the document page is used for the file name when exporting PDFs (instead of the document name).

User Interface

Menus & Palettes

- The **Work Mode** option allows you to determine whether you are a **Beginner**, **Advanced** or **Professional** user when you first start the program or afterwards in the preferences. The option controls whether only a few, many or all options of the program should be displayed. This option is useful if you are a beginner and want to approach the program's possibilities step-by-step. This option also works in conjunction with the **Access Rights** option and is especially helpful in the browser-based Web Edition.
- The **Quick Access** palette has been revised for texts and extended for images, tables, objects and paths.
- The **Toolbar** option allows you to create your own palettes. This option is useful if you want to have certain options of the program in direct access. This option also works in conjunction with the **Access Rights** option and is especially useful in the browser-based Web Edition.
- The **Menu bar** option in the access rights allows you to specify whether a program menu should be displayed at all. In this case, the user sees only the available palettes. In connection with the strongly extended **Quick Access** palette and the options for **Toolbars**, it is possible to do without the menu completely in many cases. This option is especially useful in the browser-based Web Edition.
- The **Custom Document-Related Toolbars** options in the **Access Rights** allow you to specify whether to display custom palettes that are linked to the document. This option is particularly useful in the browser-based Web edition.